



Support AGU's Mission
to Protect Science!

DONATE



Advertisement | [Advertise with us](#)



Join AGU | Donate | Eos.org | AGU.org | AGU Connect

23 October 2025

Introducing the AGU Grant Finder



Searching for research funding can be frustrating, especially during these unprecedented times—but it doesn't have to be. Discover the **AGU Grant Finder**—your gateway to 7000+ funding opportunities refreshed weekly.

Search by keyword or funder to get recommendations that match your scientific background. Check back often to be the first one to apply!

Find funding today.

FIND YOUR NEXT GREAT HIRE AT AGU25!

Find your next great hire at AGU25! This is your chance to participate as a recruiter in “AGU Recruiter Connect” at AGU25 – a unique opportunity to interview exceptional candidates in the Earth and space sciences. Create your own 5-hour schedule over the span of four days. [Register today.](#)

REGISTER



Meet one-on-one with an AGU Editor at AGU25! AGU Publications is offering personalized, one-on-one meetings with editors from our high-impact journals and books program. Get expert advice on publishing your research or pitching a new book idea by signing up today.

SIGN UP



Particulate Gravity Currents: Theory, Experiments, and Environmental Applications, a new book from AGU, offers insights into the properties, behavior, and dynamics of particulate gravity currents. Understanding how these mixtures of particles and fluid move, mix, stratify, and settle has applications such as hazard mitigation and pollution management. Browse Chapter 1 online (see “Read an Excerpt”).

READ



Don't miss your chance to attend the flagship conference for the ocean sciences and the larger ocean-connected community, this coming February in Glasgow, Scotland—a global hub for ocean science and innovation. With just four months to go, now is the time to register, review your travel plans and secure housing. Register now to take advantage of early bird registration rates available through 14 January 2026!

REGISTER

AGU Journals



Chang'e-6 gathers Moon beads

READ



Cloud-resolving models recreate Hurricane Katrina

READ

Advertisement | [Advertise with us](#)

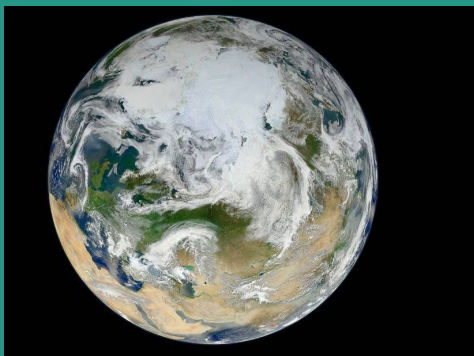

BOOK HOUSING FOR #AGU25

Reserve your hotel through the official AGU25 housing site to get the best rates.

Deadline 19 November

RESERVE

AGU25
New Orleans, LA | 15-18 December 2025



Request A Science Lecture For Your Institution

Looking for an Earth or space scientist to speak to your class or institution this fall semester or in 2026? AGU's [College of](#)

[Fellows Distinguished Lecture Series](#) program connects AGU Honorees with students around the world through engaging, high-level lectures. These talks cover specific fields of science for general science audiences and focus on grand challenges and societal impacts. Request live, virtual lectures at no charge today!

REQUEST

Upcoming Deadlines & Events

23 Oct: [Science Policy October Days of Action Webinar](#) (2 PM ET)

5 Nov: [Deadline to submit an abstract for an AGU25 Late-Breaking Session](#)

6 Nov: [Early bird registration deadline for AGU25](#)

19 Nov: [Deadline to book housing for AGU25](#)

10-21 Nov: [UN Climate Change Conference \(COP30\) in Belém, Brazil](#)

15-19 Dec: [AGU25 Annual Meeting in New Orleans, LA](#)

14 Jan: [Early bird registration deadline for OSM26](#)

AGU in the News

[The Arctic is still warming, so why no new sea ice low record since 2012?](#). *The Weather Network* (Canada), 20 October. [Geophysical Research Letters](#).

[An Iranian volcano is showing signs of activity - more than 700,000 years after its last eruption](#). *New York Post*, 20 October. [Geophysical Research Letters](#).

[Taftan Volcano May Be Waking Up After a 700,000-Year Slumber](#). *Discover Magazine*, 20 October. [Geophysical Research Letters](#).

[This Volcano Was Dormant for 700,000 Years-It Might Be Waking Up](#).

Popular Mechanics, 20 October. [Geophysical Research Letters](#).

Chandrayaan-2 detects solar ejection's impact on moon's atmosphere.
The Times of India, 19 October. [Geophysical Research Letters](#).

Stranded coral boulders point to a medieval tsunami in the Caribbean.
Science Magazine, 20 October. [Geophysical Research Letters](#) and [JGR Solid Earth](#).

Evidence of catastrophic medieval tsunami in Caribbean reveals risk to region. The Independent (UK), 17 October. [Geophysical Research Letters](#).

Dry ice may burrow through Mars like sandworms in 'Dune'. SPACE.com, 16 October. [Geophysical Research Letters](#).

Scientists Resurrect 40,000-Year-Old Microbes From Alaskan Permafrost. What They Found Raised Worries About the Future of a Warming Arctic. Smithsonian Magazine, 15 October. [JGR Biogeosciences](#).

Greenland is shrinking, satellite data reveals. Newsweek, 15 October. [JGR Solid Earth](#).

AGU is a global community supporting more than half a million advocates and professionals in the Earth and space sciences.



© 2025 AGU All rights reserved.
2000 Florida Ave NW, Washington DC 20009
<http://www.agu.org> | [Manage Preferences](#)

This email was sent to . If you no longer wish to receive these emails you may [manage your preferences](#) at any time.